

April 2022

GUIDE FOR THE ERASMUS+ INCOMING STUDENTS





WELCOME TO THE BUCHAREST UNIVERSITY OF ECONOMIC STUDIES!

About Us & Contact

PAGE 4, 5 & 6

Academic Calendar

PAGE 7

Registration
& Deadlines

PAGE 8

Accommodation

PAGE 9

Foreign Languages

PAGE 10

Courses

PAGE 11, 12 & 13

**Buddy Network & Other
Services**

PAGE 14

Living Costs

PAGE 15

**Entry &
Residence Regulation**

PAGE 16

**Health
Insurance**

PAGE 17

**Info about
Bucharest & Romania**

PAGE 18



ABOUT US



The Bucharest University of Economic Studies (Romanian abbreviation - ASE) is a public university in Bucharest, Romania, established on the 6 April 1913 by the Royal Decree of Carol I of Romania. It was the first economic higher education institution in the country and currently is one of the largest economic higher education institutes in South-Eastern Europe.

ASE in numbers:

- 13 faculties;
- 23000 + students (3,5 % international);
- 25 Undergraduate programmes;
- 78 Master programmes.

International programmes:

Undergraduate:

9 in English, 1 in French, 1 in German.

Master:

16 in English, 1 in French, 1 in German/



For more information about our university,
check out our website:



CONTACT

Address:

Piata Romana 6, 010374 – Bucharest, Romania

www.international.ase.ro

Facebook:

<https://www.facebook.com/ASEBucharest.DRI>

Instagram:

https://www.instagram.com/erasmus_ase/

Erasmus+ Office:

erasmus@ase.ro

T: (+4) 021 319 19 10

T/F: (+4) 021 319 20 23

CONTACT



Head of the Erasmus+ Office:

Christine Demeter

christine.demeter@ase.ro

(+4) 021 319 19 00, ext. 444

Incoming Student Mobility:

Teodora Fulga – Officer

teodora.fulga@amp.ase.ro

(+4) 021 319 19 10

Outgoing Student Mobility:

Maria Todircan – Officer

mariana.todircan@ase.ro

(+4) 021 319 19 00, ext. 621

ACADEMIC CALENDAR

The academic calendar becomes available by the end of June each year. The schedule of subjects is available at the beginning of each semester.

WINTER SEMESTER (14 weeks classes + 2 weeks exams):

Semester dates: October 1st – mid-February

Christmas break: 2 weeks

Exam session 1: mid January – beginning of February

SUMMER SEMESTER (14 weeks classes + 3 weeks exams):

Semester dates: mid-February – mid-June

Easter break: 1 week

Exam session 2: the first three weeks of June

WELCOME SESSION for incoming students: the 1st day of each semester.

*For the subjects for which the final evaluation is a colloquium, the examination takes place within the respective class (lecture or seminar), usually during the pre-session (the last two weeks of the semester). In case of failed exams, there is a re-examination session by the end of June for all the exams (winter and summer sessions). The students can re-sit an exam or colloquium where they were absent, failed or want a re-evaluation of the original grade.





REGISTRATION PROCESS & DEADLINES

REQUIRED DOCUMENTS:

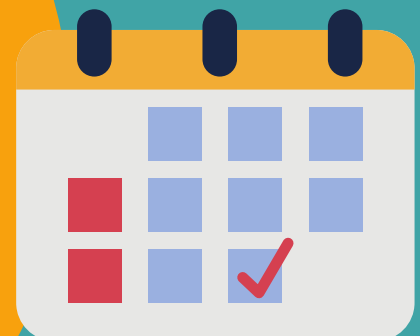
- application form;
- accommodation form (optional);
- learning agreement;
- copy of the ID card/ passport;
- copy of the health insurance;
- 1 ID-color type photo.

DEADLINE TO SUBMIT THE DOCUMENTS:

- for the winter semester and full academic year: July 30th;
- for the summer semester: December 15th.

NOMINATION PROCESS:

The Bucharest University of Economic Studies accepts exchange students nominated by its partner universities. The nomination is done by e-mail at erasmus@ase.ro (full name, duration of the stay, e-mail). The nominated students will be contacted afterwards for the application process.





ACCOMMODATION

Student housing is generally one of the most affordable accommodation you will find in Bucharest and also one of the best ways to meet new people. You can quickly build your social network and make new friends by living exactly where so many other students choose to live.

STUDENTS' HALL:

If you are interested in living in our campus, you will be accommodated in Belvedere A7 and A8 Students' Hall, situated at about 30 minutes from the university. Reservations are made through the Department of International Relations (accommodation form).

Accommodation cost per semester:

- 675 Eur/ per place in a double room;
- 450 Eur/ place in a triple room.

Accommodation guarantee: 300 Eur.

PRIVATE ACCOMMODATION:

If you prefer living in a flat or in a private students' hall, you must know that the university does not take any responsibility for finding private accommodation. However, you can find below a list of private students' halls:

- www.arcca.ro;
- www.campusest.ro;
- www.westgatestudios.ro/locuinte.

FOREIGN LANGUAGES



LANGUAGE REQUIREMENTS:

Depending on the language of instruction (English, French, German or Romanian), exchange students are required to have an advanced level for the respective language (minimum level B1 of the Common European Framework of Reference, recommended level B2), in order to be able to successfully complete courses at The Bucharest University of Economic Studies.



Our university does not require official language certificates as we trust our partners to send students who fulfill the aforementioned criteria. However, if students do not meet the language requirements, we reserve us the right to withdraw them from courses.

LANGUAGE COURSES:

- English, French and German: for intermediate and advanced learners;
- Arabic, Chinese, French, German, Italian, Japanese, Russian, Spanish, Turkish: for beginners and intermediate levels.

Courses are offered during both semesters, free of charge (2 h/week). Availability depends on the number of registered students in the elective courses.

COURSE CATALOGUE:

Our university offers a wide variety of courses, taught in English, French and German. From our perspective you can choose any courses, from any faculty, year and cycle of studies, but you should check with your home coordinator for the choice & recognition of the subjects/ no. of credits. There is no minimum or maximum requirement for incoming exchange students. Course load depends on the requirements of the home institution. We recommend 30 ECTS/semester. Since you are free to choose courses from all the programs and years of study (provided you have the necessary background and language proficiency) it is your responsibility to make sure there are no overlaps, so as to be able to attend the courses in full.

Find the available courses here:

COURSES



CLASS FORMAT:

Each class has two types of activities:

- lectures (attended by a large number of students, provide the theoretical background);
- application seminars (attended by smaller groups of students – around 20 – suppose practical activities: case studies, problem-solving, group discussions, simulations, paper preparation & presentation etc.).



COURSES



ATTENDANCE AT LECTURES & SEMINARS

Attendance at the lectures is highly recommended.

Participation to seminars is usually part of the final examination (between 30 and 100% of the final grade, depending on the subject), so it is strongly recommended to attend all the seminars.

The contents of the lectures and the evaluation methods are presented by each professor at the beginning of the semester (also presented in the course description).



COURSES



GRADING SYSTEM

The Romanian grading scale is from 1 (minimum) to 10 (maximum), the minimum grade for passing an exam and obtaining the ECTS points corresponding to a subject is 5.

GRADING SCALE



EXCELLENT	(A)	10
VERY GOOD	(B)	9
GOOD	(C)	8, 7
SATISFACATORY	(D)	6
PASS	(E)	5
FAIL	(F)	≤ 4

TRANSCRIPT OF RECORDS

At the end of the semester, we will issue a grade report for each student and we will send it to the coordinator at the home university.

BUDDY NETWORK & OTHER SERVICES



BUDDY NETWORK:

In order to prepare your arrival, we recommend you to contact the ASE Erasmus Students Network. The volunteers are students of our university that will act as personal mentors ("Erasmus Buddy"). They also organize orientation and integration events, trips, social and cultural events.

Facebook page:

<https://www.facebook.com/esn.ase.buch>

E-mail:

buddy-system@ase-bucharest.esn.ro

ADVISORY SERVICES:

The academic staff of the Department for International relations can provide academic support to exchange students in selecting the appropriate courses or in other academic matters. Our office also offers assistance for obtaining/ prolongation of the visa for foreign students.

LIVING COSTS



Rent: 200-400 Euro/ month

Food: 200-300 Euro/ month

Transportation: 20-30 Euro/ month

Study materials: 30-40 Euro/ month

Entertainment: 100-200 Euro/ month

TOTAL: 550-970 Euro/ month
(depending on your lifestyle)



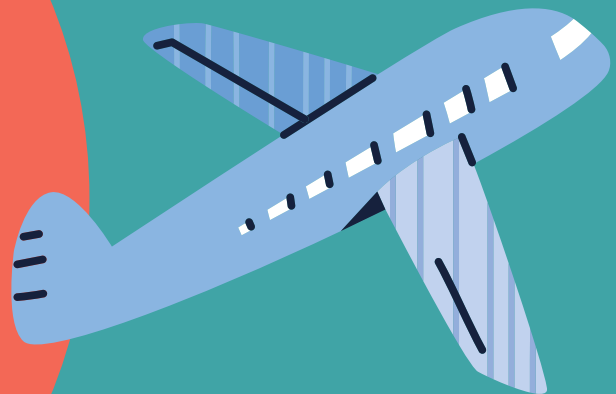
ENTRY & RESIDENCE REGULATIONS



Nationals of non-EU/EEA countries need a study visa for entry and residence in Romania as well as a private health insurance.

The complete information and documents can be found by accessing the following link:

<http://mae.ro/en/node/2035>



Before traveling to Romania, students should make sure they are familiar with the regulations concerning visas and residence permits.



HEALTH INSSURANCE



All exchange students should have health insurance:
the European health insurance card /
EHIC or an equivalent.
Without an insurance, all medical services will have to be paid.



INFO ABOUT BUCHAREST & ROMANIA

For more information on our
university, please visit our website:

www.ase.ro

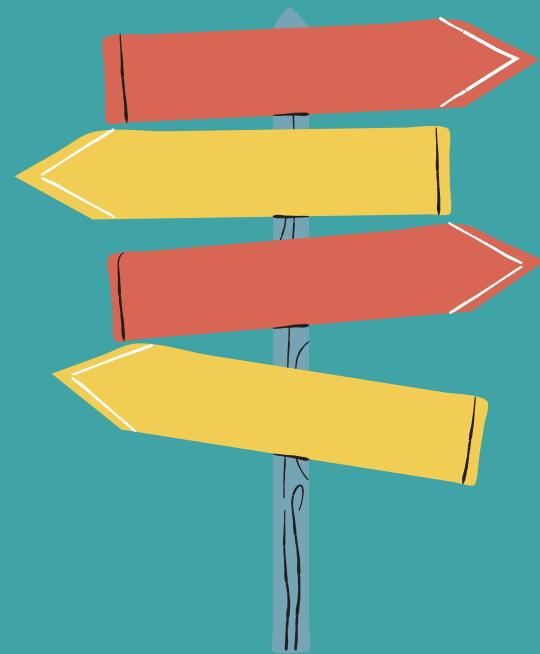
In order to prepare your arrival and
for information regarding Romania
and Bucharest, please check the
following links:

<http://www.romaniatourism.com>

<http://www.romania.travel/en>

<http://virtualromania.org/>

<http://www.visitbucharest.ro/>





WE ARE WAITING FOR YOU!



ERASMUS+ TEAM
OF THE BUCHAREST UNIVERSITY
OF ECONOMIC STUDIES